

Tikitapu/Blue Lake Scavenger Hunt

The walk around Tikitapu / Blue Lake is 5.5km and takes approximately 1.5 hours. The track is dog friendly and suitable for all terrain, three wheeled pushchairs. Remember to wear suitable footwear and take snacks and water with you to make it an enjoyable activity.

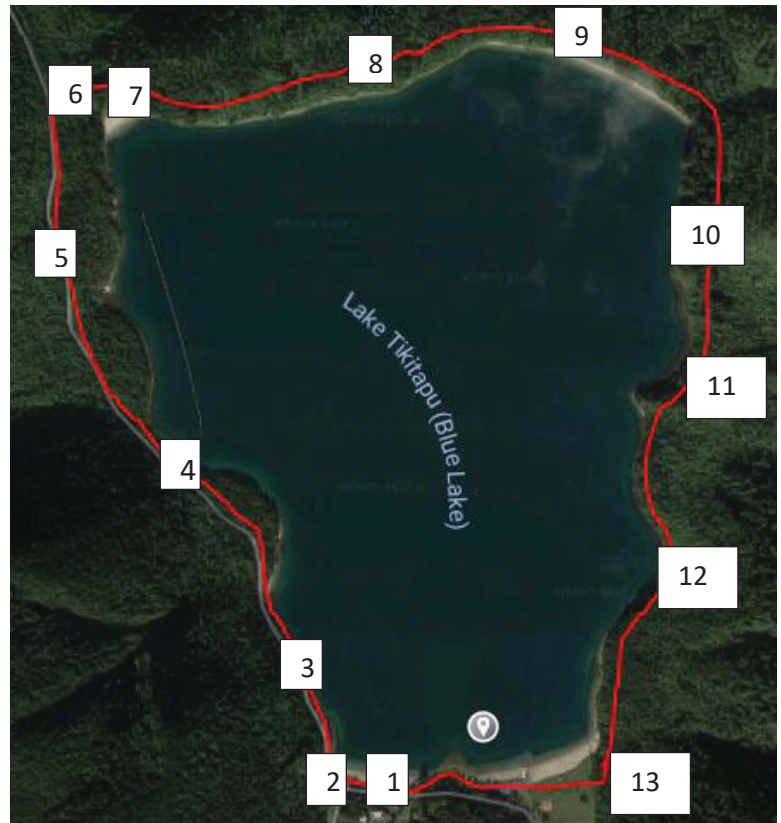
Park at the lake edge opposite the Blue Lake Top 10 Holiday Park. Take care when crossing the road - your first two clues are located on the Holiday Park side of the road.

1 What type of trees are leading up to the stairs directly located outside the Blue Lake Top 10 Holiday Park?

2 Head across to the Air Stream Café. Can you name any of the native tree species growing at the end of the caravan? What colour is the umbrella in the trees?

Cross over the road to the lake, taking care as you do. Take the roadside walkway to your left around the lake.

3 Make a note of how many different kinds of water-based activities can you see happening on the lake?



Blue Lake Top 10 Holiday Park

Can you find the water level post? What does it read today? _____

4 Peek through the trees to catch a glimpse of the floating wetland. This floating wetland was installed to help take nitrogen out of the lake. Take a guess at how many metres long it is: _____

5 Keep an eye out for a hidden bridge on your right hand side as you near the lookout sign post. Count how many planks of wood make up this secret bridge: _____



6 Woohoo! You've made it to the lookout! Take the pathway to the lookout between the lakes and take in the view of both Green & Blue Lakes. What is the Maori name for Green Lake: _____

Where did the name Tikitapu originate from? _____

Which lake was formed first? _____

7 Optional extra. Stair challenge!!! How many steps are there from the lookout carpark down to Lake Tikitapu? (Tip - you will have to go down to the lake to count then come back up to make sure you get the right number!)





8 Look above you at all the trees as you walk around the southern section of the walkway. What different types of trees do you see?

Have a go drawing some of the trees you see:

9 Junction point / intersection between Blue & Green Lake. Here you will see a big map showing you the trails through the area. Near this is a new mountain bike track, Te Kōtukutuku, that takes you down to the Green Lake.

What is the trail named after? _____

How many ponga trunks can you count that form the left hand entrance to this trail? _____



10 Skeleton leaves. As you walk around this part of the lake observe the leaves on the ground and see how many different skeleton leaves you can find. Look at the lacy patterns of the different foliage. How many different sounds can you hear?

11 When you get to this look out, close your eyes, taking a deep breath in. What type of tree can you smell? _____

Take a look out over the lake - how many buoys can you count on the lake: _____

What colour are the bouys? _____

12 Hooray you're nearly there! From the lakeside track look out towards the playground area

How many terraces can you see: _____

13 Last question! There's a Grade 2 bike track, Tangaroamihi, that starts above the terraces near the car park and heads around Tikitapu to Green Lake. Find the sign to answer this one.

Who was Tangaroamhi? _____

Congratulations! You made it!

Enjoy the playground and a treat from the Airstream Café before heading home.

PLEASE NOTE: To make this adventure enjoyable please ensure you wear appropriate clothing and footwear for the weather conditions and uneven terrain. You may also wish to take snacks & water to help sustain you along the way. There is no need to enter any water or veer from the main trail to complete this walk; any persons carrying out this challenge do so at their own risk. Sport Bay of Plenty will not be liable should an injury, loss or damage occur while carrying out this course.